

## 2006 Annual Survey of Magnetic Resonance Imaging (MRI) Services Summary Finger Lakes Region

The Finger Lakes Health Systems Agency (FLHSA) undertook a survey of MRI services in the region (Monroe, Central Finger Lakes and Southern Tier Counties) in February 2007, both to monitor the effect of additions of capacity made in recent years and to see if MRI utilization continued to increase at the pace observed in recent years or in earlier periods. This summary describes MRI resources and utilization.

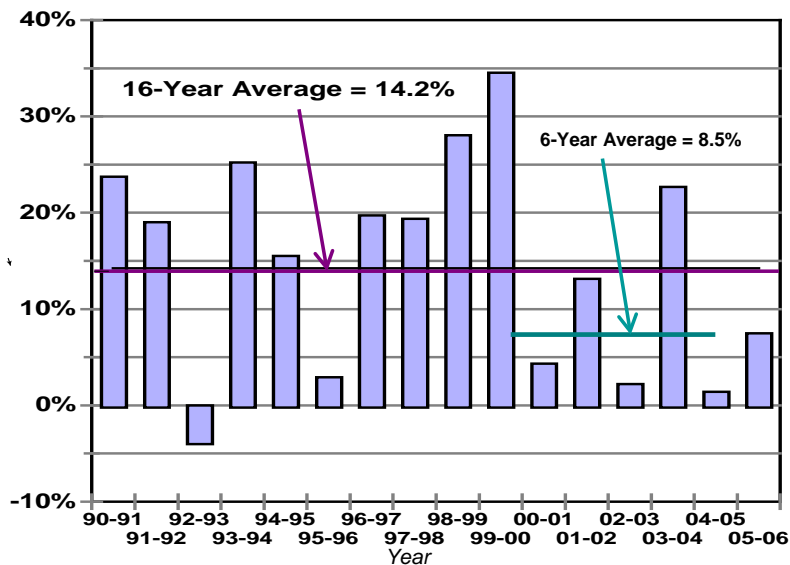
### Number of Machines:

As of December, 2006, there were 32 MRI units within the 9-county Finger Lakes region, in addition to 2 other units with limited use. Twenty-two (65 percent) of the total MRI units were stationary (including a 3.0 Tesla MRI) and 12 (35 percent) were mobile. Since the survey, 3 additional stationary MRIs became operational in Monroe County, including a 3.0 Tesla MRI.

### Utilization:

Based on the survey responses, 103,504 MRI studies were performed during 2006. MRI utilization was 7.4 percent greater during calendar year 2006 than during 2005. While MRI utilization continues to grow, the rate of growth continues to slow since 2001 (Figure 1), after the Rochester Individual Practice Association initiated clinical appropriateness reviews of radiology procedures.

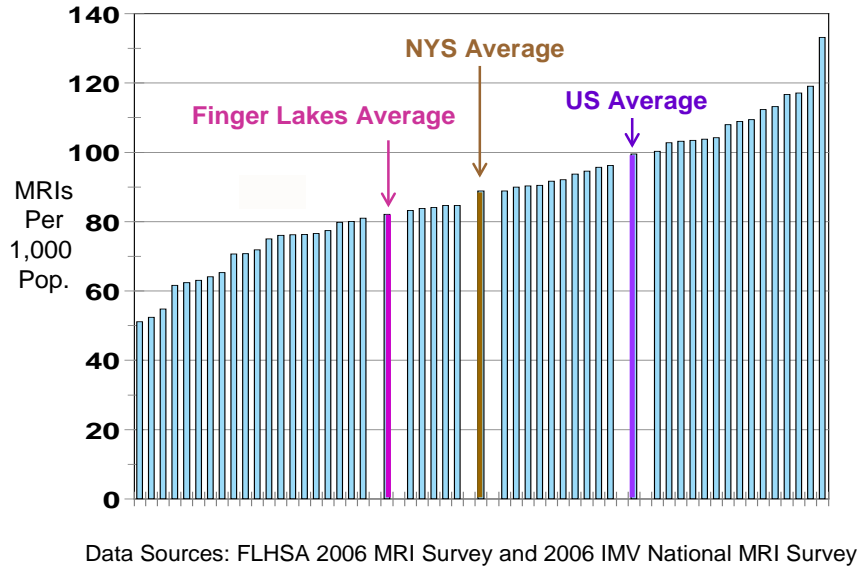
Figure 1: Percent Growth MRI Utilization in Finger Lakes Region, 1990-2006



Data Source: Finger Lakes Health Systems Agency Survey of Providers

Still, Finger Lakes MRI utilization remains lower than elsewhere in New York State and nationally (Figure 2).

Figure 2: Comparison of 2006 MRI Utilization Finger Lakes, New York State and U.S.



Of interest are changes in utilization by body site (Figure 3). Over the past 15 years, the percent of head/neck and spine/pelvis studies has decreased, while the percent of upper and lower extremities studies has grown.

Figure 3: Percent MRI Utilization by Body Site

